



Uniwat[®]

Your Comeval[®] Water Experts

WHO WE ARE

Your greatest ally

Uniwat stands out as an expert brand in water works, with multiple options within our product range, we offer the maximum guarantees while we adapt to every project requirement.

Uniwat is the water division of **COMEVAL Valve Systems**, a leader company in the field of valves and fluid control products, whose field of activity entails from the design to the installation, as well as a committed after-sales service.

Our activity is supported by the **ARI Armaturen group**, a multinational specialist in the manufacture of high-performance valves that provides us with the extra mile in strength to develop our global reach.



UNIWAT

IRRIGATION



WATER DISTRIBUTION



INDUSTRY



DESALINATION



WASTE TREATMENT



MANUFACTURE

Our specialized team of engineers is devoted to the perfection of design in each and all of our products. Through a strict process of **Quality Control** on castings that are comprehensive of complete mechanical and chemical analysis we are ensuring the traceability for each component.

Our products are subject to computer monitored pressure tests and very strict **Non Destructive Examinations** before preservation and packing.

HOW WE WORK

Comeval Valve System is a manufacturer of high-quality valves based in Spain, Europe. With our **ISO 9001** certification and **CE marking**, we ensure that our products meet the highest quality standards.

Thanks to our engineers' commitment to achieve design excellence, we ensure that each valve is crafted with maximum precision.

Following our own manufacturing plan which includes rigorous quality control measures, we ensure that each valve is up to the superior quality.

We also count with a wide expertise in **water solutions** that makes us a trusted option for any water system, ensuring reliability and exceptional performance.

They place their trust on us



Saudi Arabia
Water distribution



Bahrein
Desalination



Italy
Irrigation



Spain
Pump station



Jordan
Waste treatment

AFTER SALES

COMEVAL is renowned for its exceptional after-sales service. With a strong emphasis on engineering support, we provide expert guidance and assistance to our customers, ensuring smooth operations and optimal performance of each product. Moreover, we take pride in our management, guaranteeing quick availability and timely delivery of components to minimize downtime.

Our commitment to customer satisfaction extends globally through our network of partners and distributors, who provide local support worldwide. Whether it's troubleshooting or on-site assistance, COMEVAL's after-sales service is built on reliability, responsiveness, and a dedication to meeting customer needs.

Uniwat® - Resilient seated valves for water works

Resilient Seated Gate Valves series 504/505/507



DN40 - DN1000 / PN10-16
DN40 - DN300 / PN25

FLANGE CONNECTIONS:
DIN, BS, AWWA

FACE TO FACE F4 / F5

Body: Ductile Iron
Wedge: EPDM/NBR



EN 1074-1/2

DM174



Swing Check Valve serie 5107

DN50 - DN600 / PN 10-16

Body: Ductile Iron
Disc: EPDM/NBR



DM174



Resilient Seated Check Valves series 3240/3141

DN50 - DN300 / PN10-16
DN25 - DN80 / PN10-16

Female thread to ISO 228-1 (DIN259-BSPP)

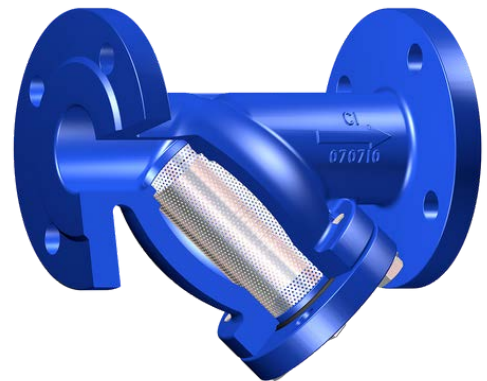
Body: Ductile Iron
Ball: EPDM/NBR



Y Strainers series 630W

DN40 - DN300 / PN 10-16

Body: Ductile Iron
Screen: Stainless steel



Triple O-ring stem sealing
(Gate valve)



Round rubber gasket on recess in bonnet
prevent blow out by pressure surges
(Gate valve)



Epoxy coat protection for body, min.
average thickness 250 µm

Technical features and accessories

- ▶ Pressure tested as per **EN 12266-1**
- ▶ Flanged valves as per **EN1092-2 type 21/B**
- ▶ Premium rubber components in compliant with **EN 681-1**.
- ▶ High quality **FBE (fusion bonded epoxy)** porous free coating. Surface areas shaped to facilitate proper epoxy coating adherence, with a minimum average thickness of 250 microns (μm).
- ▶ Marked according to **EN 19**.
- ▶ ISO TOP flange as per **ISO 5211**.
- ▶ Bolting in **St. Steel**



Resilient Seated Gate Valves series 504/505/507

- Non rising stem (504/505) or rising stem (507).
- Full bore self-cleaning with optimized flow passage for negligible pressure loss.
- Removable bushing.
- The exclusive fully encapsulated profiled and resilient wedge especially guided design offers a bidirectional bubble tight shut off for a lifetime with a smooth closing, resistant to impurities.
- The body/bonnet union bolts are galvanized and sealed by a holt-melted hydrophobic compound, with other parts exposed to the atmosphere in brass and stainless steel.



Swing Check Valve serie 5107

- Design for in-line maintenance.
- Design to reduce water hammer.
- Jam free design as no hinge nor pin design. One piece rubber flap only, for a reliable closure.
- Bonnet gasket lying in a groove between bonnet and body prevents blow-out.



Y Strainers series 630W

- Ample body design
- Drainage plug
- Bolted cover
- Rugged stainless steel perforated basket



Accessories

- Higher service temperatures
- Full range of motorisation and customized solutions designed in-house to meet specific needs.
- Limit switches
- Lock device, chainwheel
- Stem extensions



Resilient Seated Check Valves series 3240/3141

- Calibrated Rubber lined ball.
- Minimized flow restriction for high energy-efficiency.
- Bonnet gasket lying in a groove between bonnet and body prevents blow-out.
- Unobstructed full bore, self cleaning.

Different actuator brands



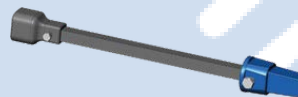
Limit switches



Telescopic extension



Simple extension



Cap



Union bolts wax protected
(Gate valve)



Rubber wedge, excellent sealing
in both directions
(Gate valve)

Uniwat® - Resilient seated Butterfly valves for HVAC, Process and Water Works

Wafer Style Centric Butterfly Valves SERIES VF701



DN 25-1200
PN 10-16 or ASA150

Body: Ductile Iron, WCB,...
Disc: Ductile Iron, St. Steel,...
Liner: EPDM, NBR,...



DM174



Lug Style Centric Butterfly Valves SERIES VF751



DN 25-600
PN 10-16 or ASA150

Body: Ductile Iron, WCB,...
Disc: Ductile Iron, St. Steel,...
Liner: EPDM, NBR,...



DM174



Double flanged concentric butterfly valves SERIES VF790 / VF7U0



DN50-1200
PN10-16

Flanges to EN1092-2 type
21/B, PN 10-16

Body: Ductile Iron, WCB,...
Disc: Ductile Iron, St. Steel,...
Liner: EPDM, NBR,...



DM174



Double Flange Double Eccentric Butterfly Valves Series VF791



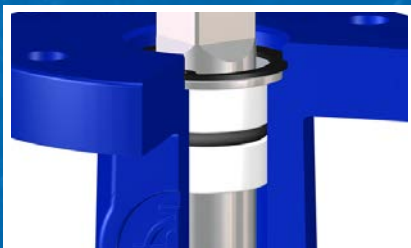
DN 100-2200 / PN 10-16-25
Flanges EN1092-2 type 21/B

Body: Ductile Iron
Disc: Ductile Iron
Liner: EPDM, NBR



EN 1074-1/2

DM174



O-ring safety shaft sealing, with retaining washer to ensure proper working under pressure



Notch Plate with position indicator and locking in intermediate positions when needed



Vulcanized rubber seat, non-collapsible, stretch resistant, blow out proof

Technical Features and accessories

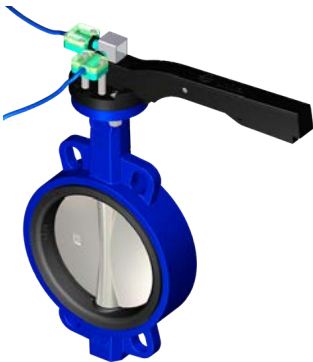
INTERNATIONAL STANDARDS

- ▶ Pressure tested as per **EN 12266-1**
- ▶ Flanged valves as per **EN1092-2 type 21/B**
- ▶ Premium rubber components in compliant with **EN 681-1**.
- ▶ Marked according to **EN 19**.
- ▶ ISO TOP flange as per **ISO 5211**.

MATERIALS AND FEATURES

- ▶ **Materials of Construction Body and Disc:** Cast Iron, Ductile Iron, ASTM A216 WCB, CF8M (St. Steel), Duplex, Super Duplex, Coated with Halar, Aluminium/Bronze
- ▶ **Materials of seat liner:** EPDM, NBR, VITON, PTFE (Only for concentric BFV)
- ▶ Bolting in **St. Steel**
- ▶ High quality **FBE (fusion bonded epoxy)** porous free coating. Surface areas shaped to facilitate proper epoxy coating adherence, with a minimum average thickness of 250 microns.
- ▶ **Options:** Silicone free execution, Extended spindle, Operation locking device, Dry shaft.

Limit switch



Locking device



Limit switch box



Locking device



Electrical actuator



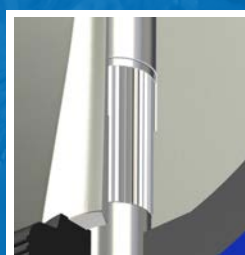
Pneumatic actuator



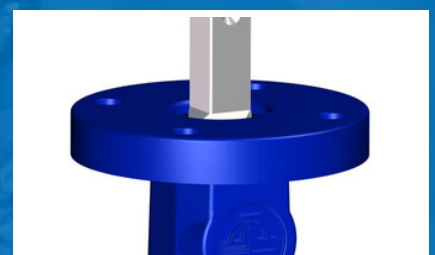
Different actuator brands



Marking according to EN19, with name plate including CE marking, valve identification and batch number for full traceability purpose



Shaft disc threaded union (up to DN300); disc offers clean surface against the fluid



Top Mounting Arrangement; top flange to suit actuators as per ISO 5211 standard

TRACEABILITY IN ONE HAND



All our valves are supplied with a **QR code** allowing to reach all valve technical details:

- **Data sheet**
- **Drawings**
- **Installation and Maintenance Manuals**
- **General certificates** (WRAS, ACS...)
- **Material and Test certificates** specific to the valve you have just received.

This means anyone, in the supply chain is able to access this information. From the Engineering dpt to the site contractors or maintenance operator.

We complete the packages with...



Wafer check valve



TILTING disc check valve



PLUNGER



Dismantling joint



Automatic Control Valve



Air Valve