



**Comeval<sup>®</sup>**

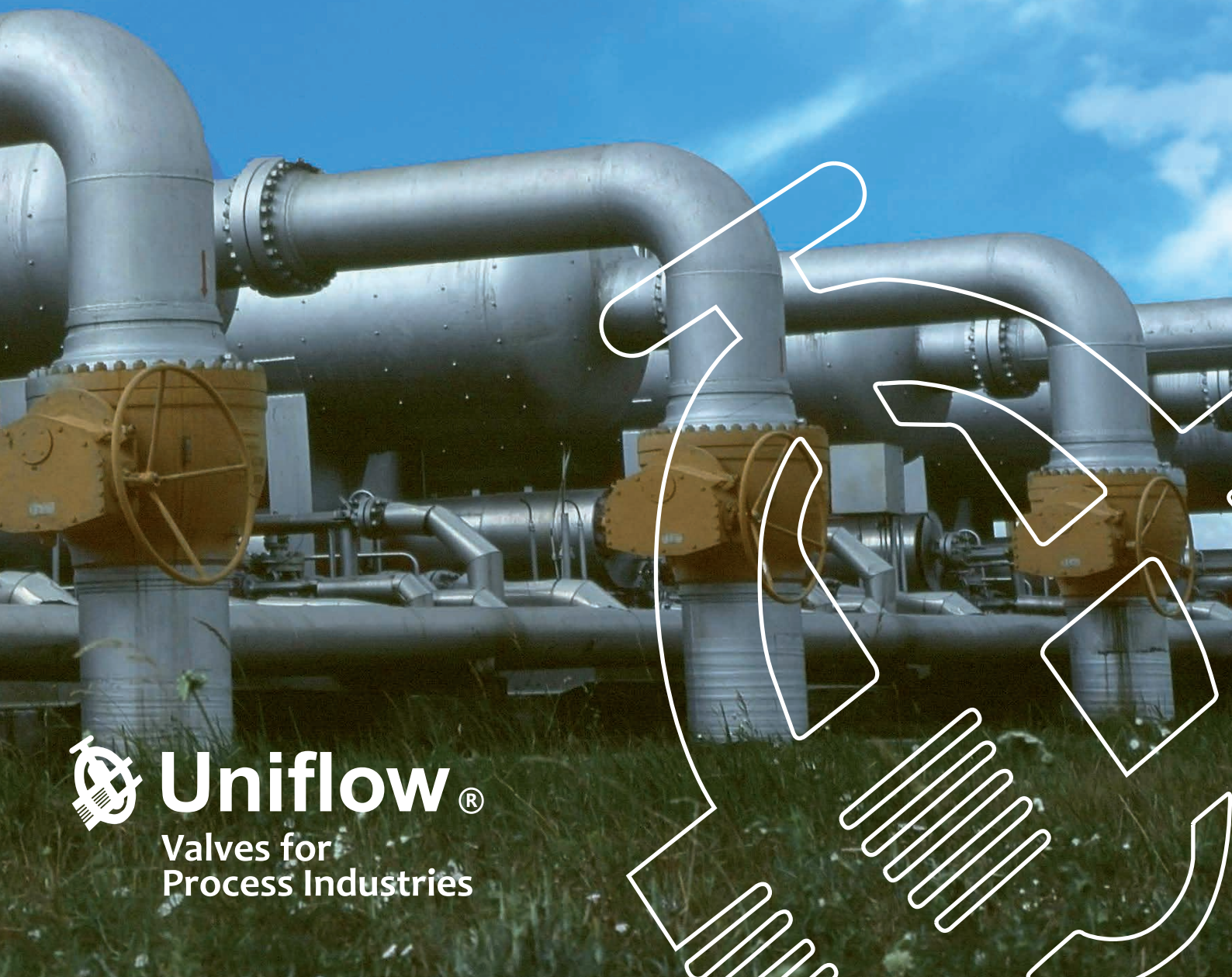


A company of the  
ARI-Armaturen Group



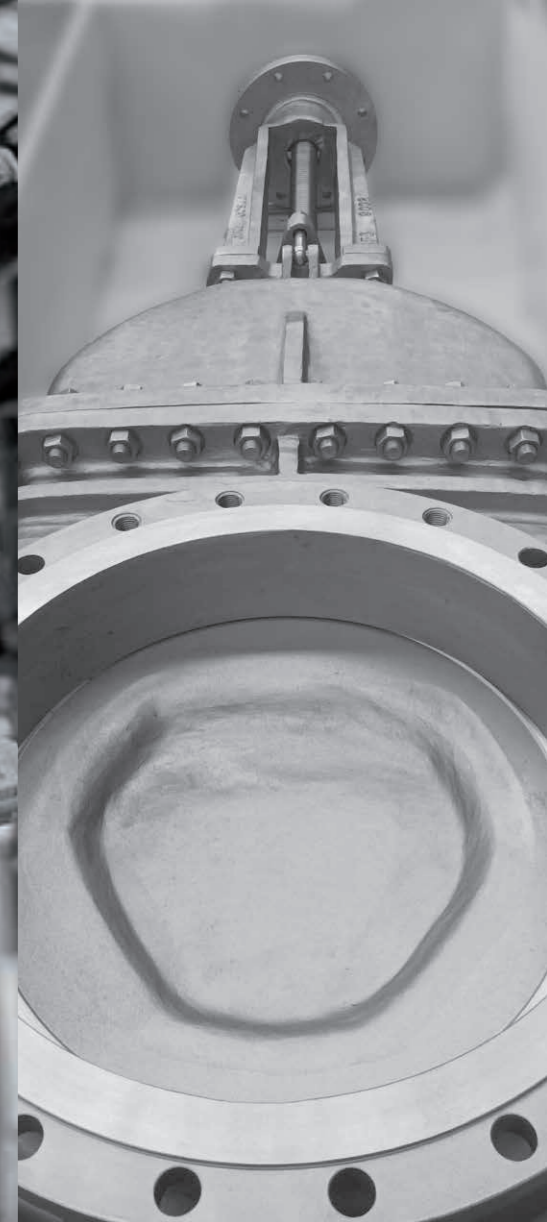
**Uniflow<sup>®</sup>**

Valves for  
Process Industries



# Uniflow<sup>®</sup>

## Valves for Process Industries



### WHO WE ARE

Uniflow stands out as an expert brand in industry works, with multiple options within our product range, we offer the maximum guarantees while we adapt to every project requirement. Uniflow is the process industry valve division of Comeval Valve Systems, a leader company in the field of valves and fluid control products, whose scope of activity entails from the design to the production, as well as a committed after-sales service. Our activity is supported by the ARI Armaturen group, a multinational specialist in the manufacture of high-performance steam application valves that provides us with the extra mile in strength to develop our global reach.

### AFTER SALES

Comeval is renowned for its exceptional after-sales service. With a strong emphasis on engineering support, we provide expert guidance and assistance to our customers, ensuring smooth operations and optimal performance of each product. Moreover, we take pride in our management, guaranteeing quick availability and timely delivery of components to minimize downtime. Our commitment to customer satisfaction extends globally through our network of partners and distributors, who provide local support worldwide. Whether it's troubleshooting or on-site assistance, Comeval's after-sales service is built on reliability, responsiveness, and a dedication to meeting customer needs.

### MANUFACTURED FOR PERFECTION

Our dedicated team of engineers is devoted to the perfection of design in each and every one of our products, specializing in exotic materials, that are undergoing a strict process of Quality Control, from design to finished products including computerized pressure tests and very strict Non-Destructive Examinations.

As a result, full traceability is ensured thanks to our individual QR codes allowing full time access to technical information, certificates, drawings, manuals and much more.

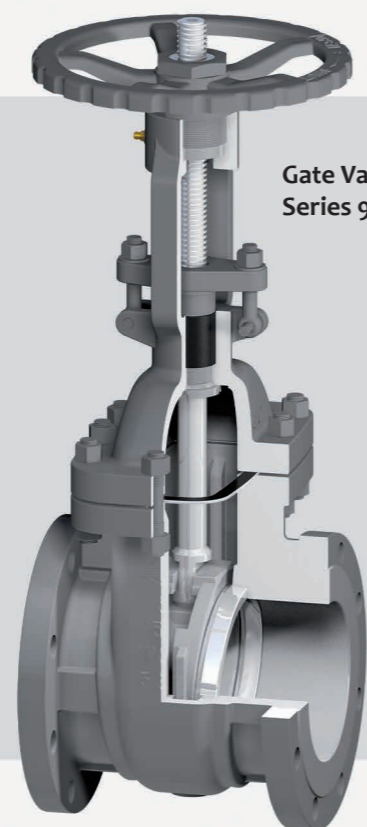
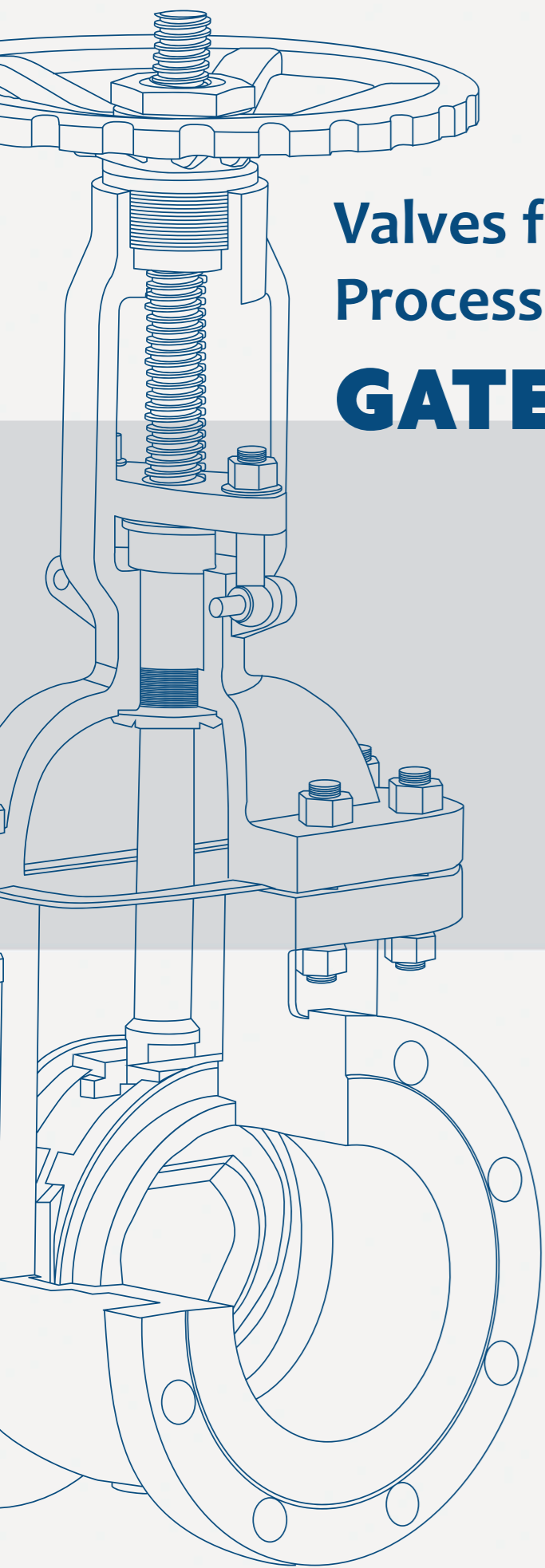
### HOW WE WORK

Comeval Valve Systems is a manufacturer of high-quality valves based in Spain, Europe. With our ISO 9001 certification and CE marking, we Follow our own manufacturing plan including rigorous quality control measures to reach the superior quality.

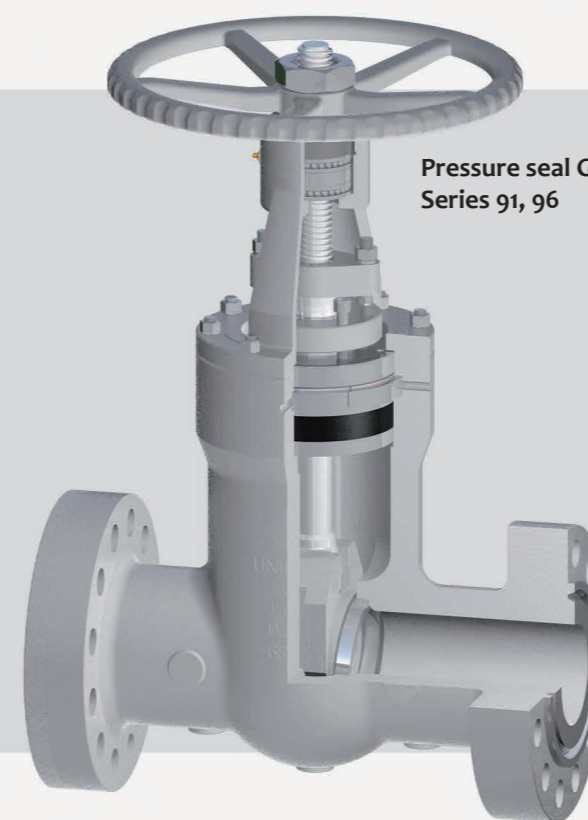
Thanks to our engineers' commitment to achieve design excellence, we ensure that each valve is crafted in conformance with all the international standards (PED, Fire Safe, ATEX...)

# Valves for Process Industries

## GATE



Gate Valves  
Series 90, 92, 94



Pressure seal Gate Valves  
Series 91, 96



Forged Gate Valves  
Series 99, 98, 97

### GATE VALVES SERIES 90, 92, 94

2" - 48" / DN50 - DN1200 / Class 150-1500 / PN16-100 / Connections RF, RTJ, BW / Standard Design: API 600 / ASME B16.34 /

#### Standard Features:

- Metal seated, bidirectional
- OS&Y
- Rising stem
- Back seating design
- Flexible wedge

#### Options:

- Fire Safe
- Non-rising stem
- Solid wedge
- Bellows seal (Fig. 94)
- Top arrangement for actuator assembly
- Pneumatic, electric or hydraulic actuation
- Lock device, chainwheel
- Position indicator, limit switches
- Packing with lantern ring
- Live load packing
- Bypass line, drain device available
- Extended bonnet and stem for cryogenic application
- Jacketed body
- Manufacturing to NACE MR0175
- Special coating for outdoors/corrosive atmosphere, high temperature service, etc.
- Special alloys as Hastelloy, Titanium, Duplex, Super Duplex among others.

### PRESSURE SEAL GATE VALVES SERIES 91, 96

3/8" - 2" / DN10 - DN50 / Class 1500-2500 (Forged) 2" - 48" / DN50 - DN1200 / Class 1500-2500 / PN160-420 / Connections RF, RTJ, BW / Standard Design: API 600 / ASME B16.34 /

#### Standard Features:

- Metal seated, bidirectional
- Pressure seal design
- Rising stem
- Back seating design
- Flexible wedge

#### Options:

- Top arrangement for actuator assembly
- Pneumatic, electric or hydraulic actuation
- Lock device, chainwheel
- Position indicator, limit switches
- Packing with lantern ring
- Live load packing
- Bypass line, drain device available
- Extended bonnet and stem for cryogenic application
- Jacketed body
- Manufacturing to NACE MR0175
- Special coating for outdoors/corrosive atmosphere, high temperature service, etc.
- Special alloys as Hastelloy, Titanium, Duplex, Super Duplex among others

### FORGED GATE VALVES SERIES 99, 98, 97

3/8" - 2" / DN10 - DN50 / Class 800-2500 / Connections RF, BW, SW, BSPP, BSPT, NPT / Standard Design: API 602 / ASME B16.34

#### Standard Features:

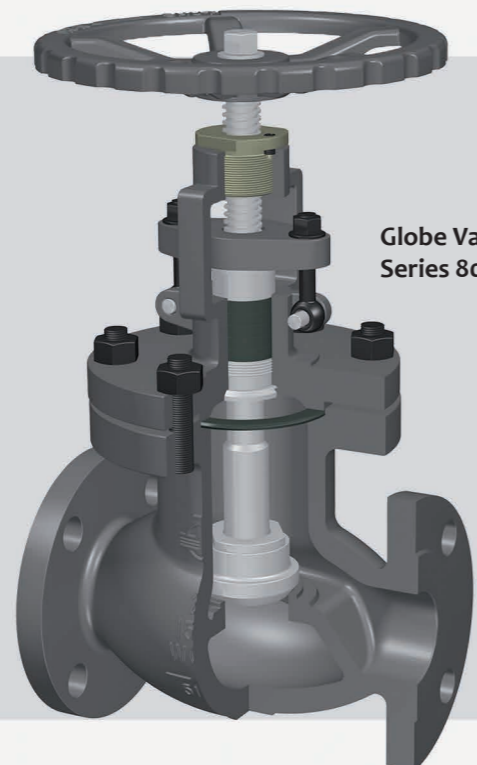
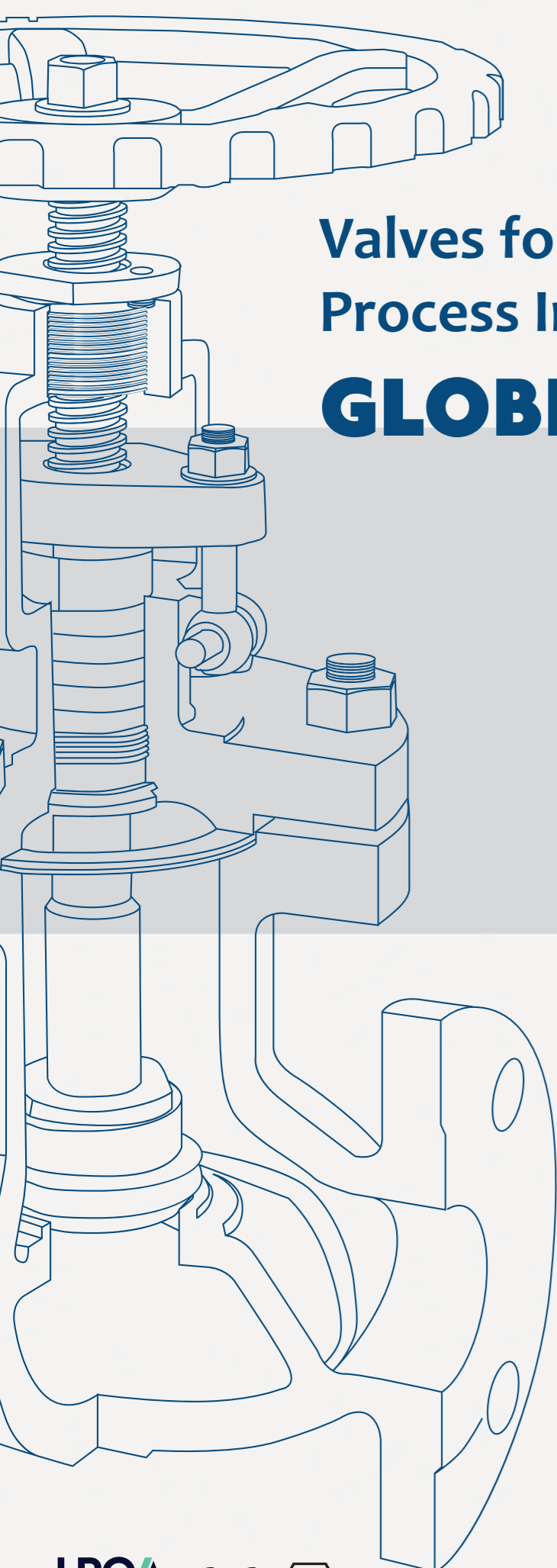
- Metal seated, bidirectional
- OS&Y, pressure seal design for high ratings
- Rising stem
- Back seating design
- Solid wedge
- Operation by Handwheel

#### Options:

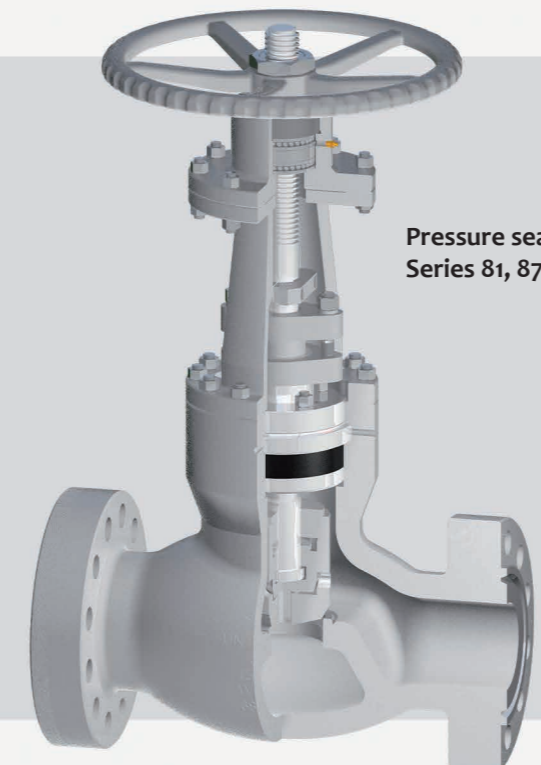
- Top arrangement for actuator assembly
- Pneumatic, electric or hydraulic actuation
- Lock device, chainwheel
- Position indicator, limit switches
- Packing with lantern ring
- Live load packing
- Welded bonnet
- Full port
- Extended bonnet and stem for cryogenic application
- Manufacturing to NACE MR0175
- Special coating for outdoors/corrosive atmosphere, high temperature service, etc.
- Special alloys as Hastelloy, Titanium, Duplex, Super Duplex among others.

# Valves for Process Industries

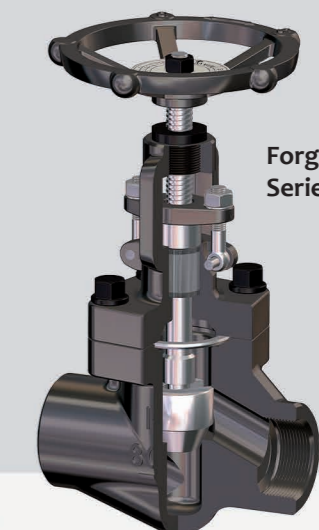
## GLOBE



Globe Valves  
Series 80, 82, 83, 84, 85, 86



Pressure seal Globe valves  
Series 81, 87



Forged Globe Valves  
Series 89, 88

### GLOBE VALVES SERIES 80, 82, 83, 84, 85, 86

2" - 24" / DN50 - DN600 / Class 150-1500 PN16-250 / Connections RF, RTJ, BW / Standard Design: BS 1873 / ASME B16.34 /

#### Standard Features:

- Metal seated, unidirectional
- OS&Y
- Non-rising stem and handwheel
- Back seating design

#### Options:

- Rising stem and handwheel
- Parabolic plug for throttling/regulating function
- Top arrangement for actuator assembly
- Pneumatic, electric or hydraulic actuation
- Lock device, chainwheel
- Position indicator, limit switches
- Packing with lantern ring
- Live load packing
- Bypass line, drain device available
- Jacketed body
- Extended bonnet and stem for cryogenic application
- Manufacturing to NACE MR0175
- Special coating for outdoors/corrosive atmosphere, high temperature service, etc.
- Special alloys as Hastelloy, Titanium, Duplex, Super Duplex among others.

### PRESSURE SEAL GLOBE VALVES SERIES 81, 87

3/8" - 2" / DN10 - DN50 / Class 1500-2500 (Forged) 2" - 48" / DN50 - DN1200 / Class 1500-2500 / PN250-420 / Connections RF, RTJ, BW / Standard Design: API 600 / ASME B16.34 /

#### Standard Features:

- Metal seated, unidirectional
- Pressure seal design
- Rising stem
- Back seating design
- Balancing plug for operation with high pressure

#### Options:

- Parabolic plug for throttling/regulating function
- Top arrangement for actuator assembly
- Pneumatic, electric or hydraulic actuation
- Lock device, chainwheel
- Position indicator, limit switches
- Packing with lantern ring
- Live load packing
- Bypass line, drain device available
- Extended bonnet and stem for cryogenic application
- Jacketed body
- Manufacturing to NACE MR0175
- Special coating for outdoors/corrosive atmosphere, high temperature service, etc.
- Special alloys as Hastelloy, Titanium, Duplex, Super Duplex among others

### FORGED GLOBE VALVES SERIES 89, 88

3/8" - 2" / DN10 - DN50 / Class 800-2500 / Connections RF, BW, SW, BSPP, BSPT, NPT / Standard Design: API 602 / ASME B16.34

#### Standard Features:

- Metal seated, unidirectional
- OS&Y
- Rising stem and handwheel
- Back seating design
- Operation by Handwheel

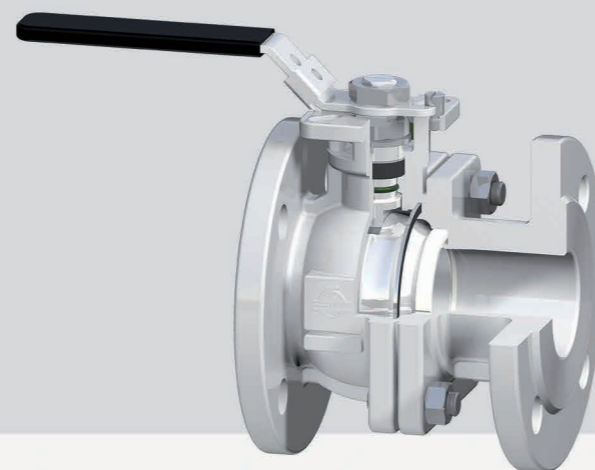
#### Options:

- Parabolic plug for throttling/regulating function
- Top arrangement for actuator assembly
- Pneumatic, electric or hydraulic actuation
- Lock device
- Position indicator, limit switches
- Packing with lantern ring
- Live load packing
- Welded bonnet
- Full port
- Extended bonnet and stem for cryogenic application
- Manufacturing to NACE MR0175
- Special coating for outdoors/corrosive atmosphere, high temperature service, etc.
- Special alloys as Hastelloy, Titanium, Duplex, Super Duplex among others.

# Valves for Process Industries

## BALL

Ball Valves  
Series BG, BF



### BALL VALVES SERIES BG, BF

1/2" - 8" / DN15 - DN200 / Class 150-600 / PN16-100 / Connections RF, RTJ, BW / Standard Design: API6D / ASME B16.34 /

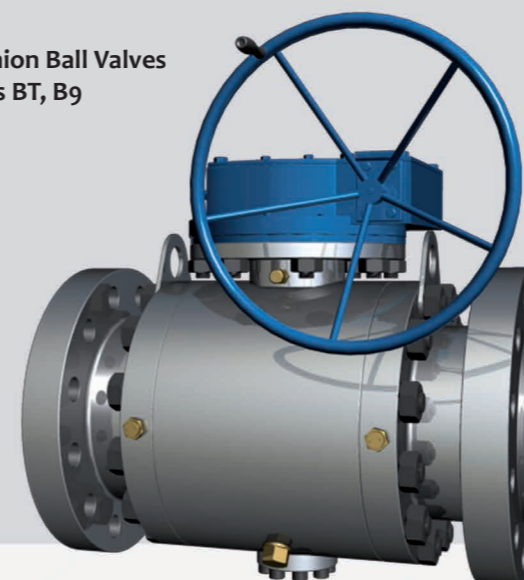
#### Standard Features:

- Metal or soft seated, bidirectional
- Full bore or reduced bore
- Blow-out proof stem
- Body cavity pressure relief
- Anti-static design
- Fire safe design to API 6FA / API 607, ISO 10497
- Fugitive Emissions certified ISO 15848-1 (Series BG)

#### Options:

- Larger sizes
- Metal seated
- Lock device, chainwheel
- Position indicator, limit switches
- Live load packing
- Jacketed body
- NACE MR0175 design
- Special coating for outdoors/corrosive atmosphere, high temp., etc.
- Special alloys as Hastelloy, Titanium, Duplex, Super Duplex, etc.

Trunnion Ball Valves  
Series BT, B9



### TRUNNION BALL VALVES SERIES BT, B9

2" - 36" / DN50 - DN900 / Class 150-2500 / PN16-420 / Connections RF, RTJ, BW / Standard Design: API6D / ASME B16.34 /

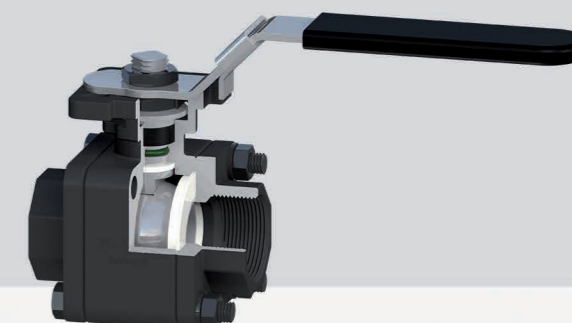
#### Standard Features:

- Metal or soft seated, bidirectional
- 2 pieces or 3 pieces body
- Full bore or reduced bore
- Solid or light ball
- Blow-out proof stem
- Body cavity pressure relief
- Cast or forged material
- Anti-static design
- Fire safe design to API 6FA

#### Options:

- Double block and bleed feature (DBB)
- Double piston effect function (DPE)
- Drain and vent connections
- Injection sealing
- Top arrangement to ISO 5211 for actuator assembly
- Lifting lugs and supporting feet
- Lock device, chainwheel
- Position indicator, limit switches
- Live load packing
- Fully welded construction
- Jacketed body
- Underground application structure available
- Cryogenic design
- NACE MR0175 design
- Special coating for outdoors/corrosive atmosphere, high temperature service, etc.
- Special alloys as Hastelloy, Titanium, Duplex, Super Duplex among others.

Forged Ball Valves  
Series B8



### FORGED BALL VALVES SERIES B8

3/8" - 2" / DN10 - DN50 / Class 800-2500 / Connections RF, BW, SW, BSPP, BSPT, NPT / Standard Design: API 6D / ASME B16.34 /

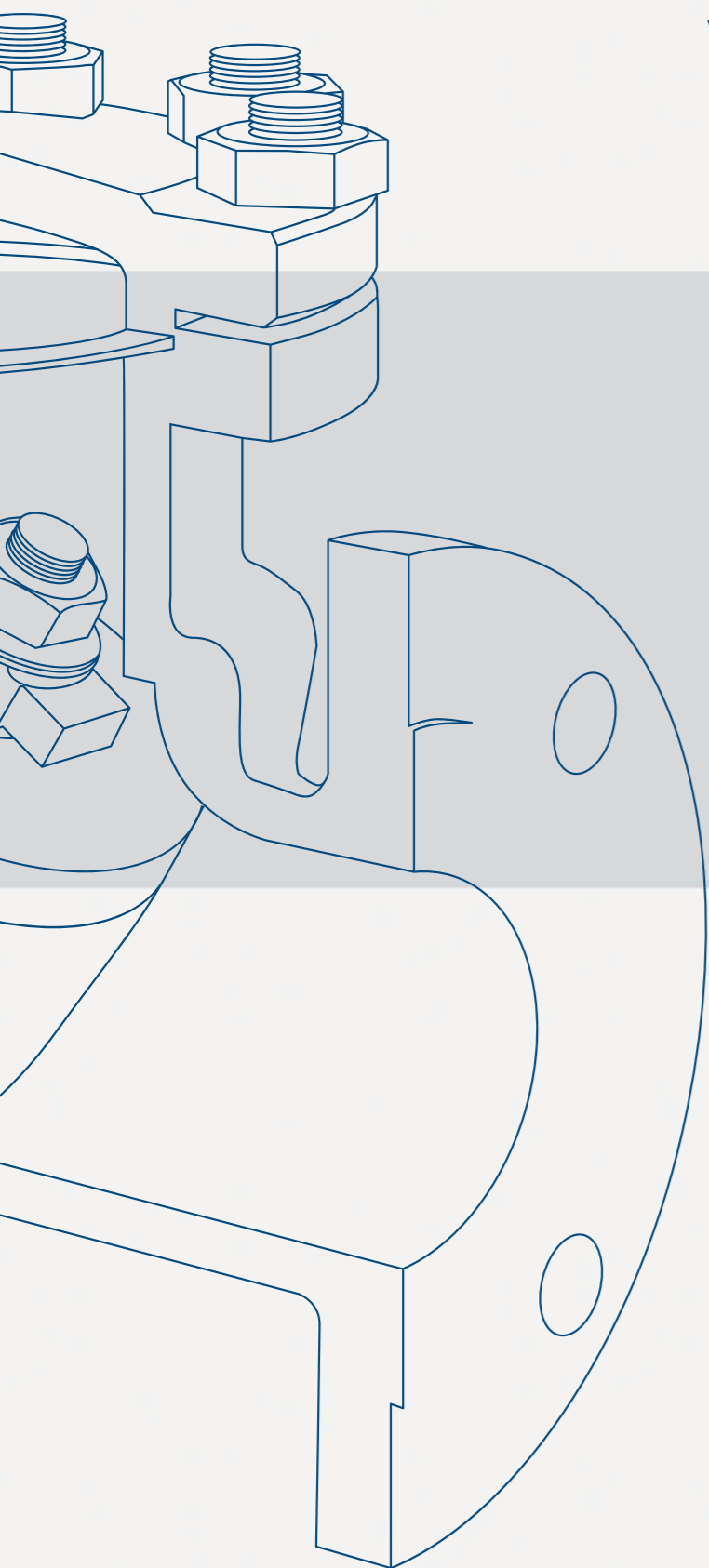
#### Standard Features:

- Metal or soft seated, bidirectional
- 2 pieces or 3 pieces body
- Full bore or reduced bore
- Blow-out proof stem
- Body cavity pressure relief
- Cast or forged material
- Anti-static design
- Fire Safe design to API 607

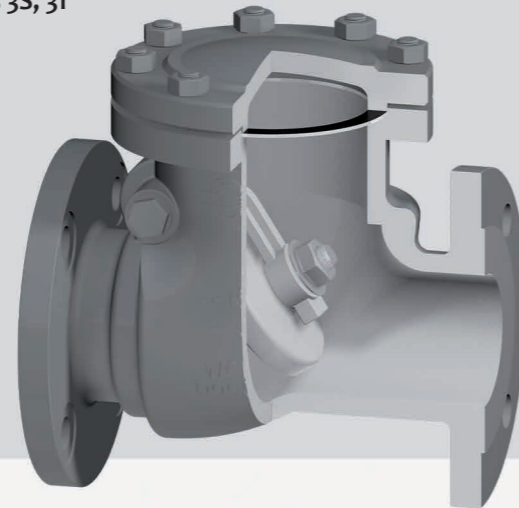
#### Options:

- Drain connections
- Top arrangement to ISO 5211 for actuator assembly
- Lock device, chainwheel
- Position indicator, limit switches
- Fully welded construction
- Cryogenic design, vacuum service design
- NACE MR0175 design
- Special coating for outdoors/corrosive atmosphere, high temperature service, etc.
- Special alloys as Hastelloy, Titanium, Duplex, Super Duplex among others.

# Valves for Process Industries **CHECK**



Check Valves  
Series 3S, 31



### CHECK VALVES SERIES 3S, 31

2" - 36" / DN50 - DN900 / Class 150-2500 / PN16-420 / Connections RF, RTJ, BW / Standard Design: API 6D / ASME B16.34 / BS1868

**Standard Features:**

- Metal seated
- Pressure seal design for high ratings
- Full bore design

**Options:**

- Jacketed body
- Counterweight and hydraulic
- Tilting design
- Special coating for outdoors/corrosive atmosphere, high temperature service, etc.
- Special alloys as Hastelloy, Titanium, Duplex, Super Duplex among others.

Dual Plate Check Valves  
Series DP



### DUAL PLATE CHECK VALVES SERIES DP

2" - 24" / DN50 - DN600 / Class 150-2500 / PN16-420 / Connections RF, RTJ, BW / Standard Design: BS 1873 / ASME B16.34 / API 594

**Standard Features:**

- Retainless design
- Metal seated

**Options:**

- Special coating for outdoors and corrosive atmosphere, high temperature service, etc
- Special alloys as Hastelloy, Titanium, Duplex, Super Duplex among others.

Forged Check Valves  
Series 39, 35



### FORGED CHECK VALVES SERIES 39, 35

3/8" - 2" / DN10 - DN50 / Class 800-2500 / Connections RF, BW, SW, BSPP, BSPT, NPT / Standard Design: API 602 / ASME B16.34

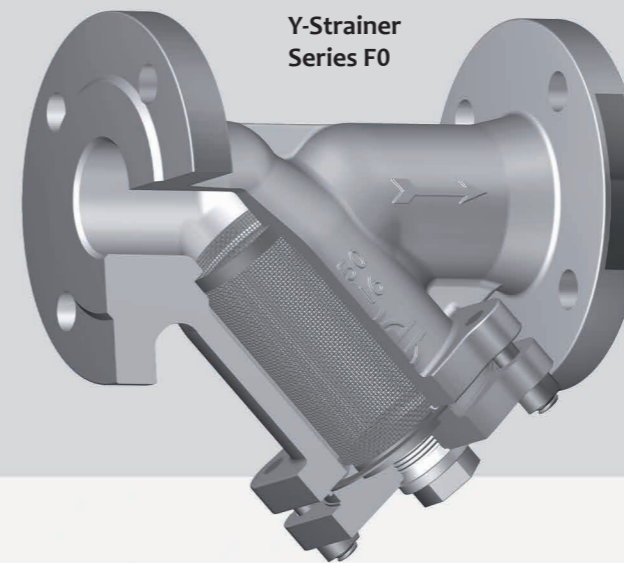
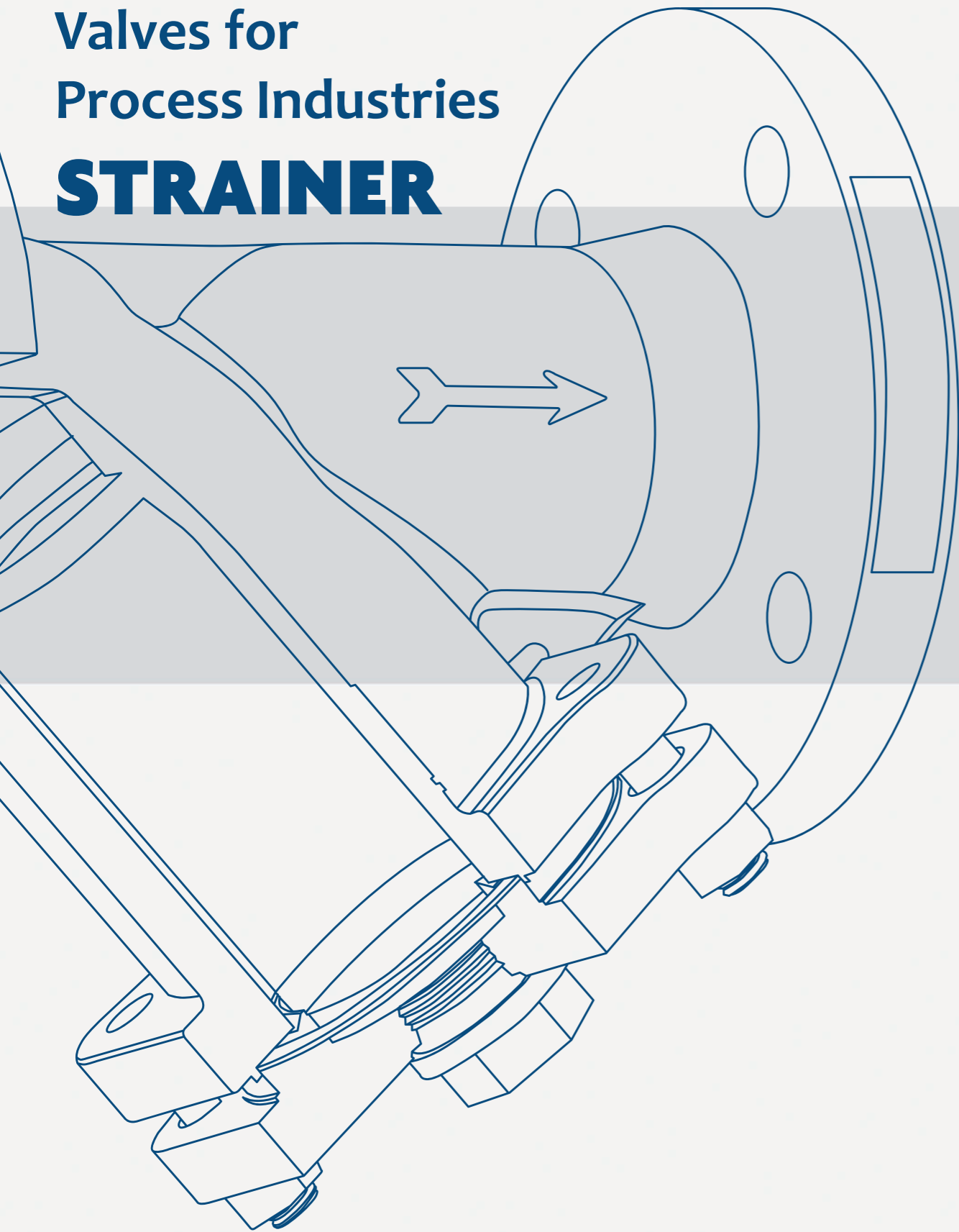
**Standard Features:**

- Metal seated
- Pressure seal design for high ratings
- Regular port design
- Piston or swing check design

**Options:**

- Special coating for outdoors/corrosive atmosphere, high temperature service, etc.
- Special alloys as Hastelloy, Titanium, Duplex, Super Duplex among others.
- Full port

# Valves for Process Industries **STRAINER**



Y-Strainer  
Series F0



Forged Y-Strainers  
Series F9

## Y-STRAINER SERIES F0

2" - 24" / DN50 - DN600 / Class 150-600 / PN16-100 / Connections RF, RTJ, BW / Standard Design: API 6D / ASME B16.34 / EN 12516

### Standard Features:

- Replaceable screen
- Screen made of wire mesh or perforated basket, with full range of available widths/perforations
- Bolted cover or pressure seal cover for high sizes/ratings

### Options:

- Special execution for outdoors/corrosive atmosphere, high temperature service, etc.
- Special alloys as Hastelloy, Titanium, Duplex, Super Duplex among others.

## FORGED Y-STRAINERS SERIES F9

3/8" - 2" / DN10 - DN50 / Class 800-2500 / Connections RF, BW, SW, BSPP, BSPT, NPT / Standard Design: BS 5352 / ASME B16.34

### Standard Features:

- Replaceable screen
- Screen made of wire mesh or perforated basket, with full range of available commercial widths/perforations
- Bolted cover or pressure seal cover for high sizes/ratings

### Options:

- Special execution for outdoors/corrosive atmosphere, high temperature service, etc.
- Special alloys as Hastelloy, Titanium, Duplex, Super Duplex among others.

## PROJECT MANAGEMENT

One of our main assets lies in our team's knowledge and our production capacity. We are experts in project management, from budgeting to commissioning standing out for our corrosion and abrasion solutions.

Our technical project advisors will help you to find the best solution according to your specifications and with a view to increasing the service life of your installation as well as minimizing maintenance. Everything considering international standards, site conditions, NDT and certifications requested.

After receiving your order and making all the necessary clarifications at the kick-off meeting, we will prepare the documentation following your requirements for formats, deadlines, uploading to the platform, or any other request specified in the project. Production only starts after document approval, and you will always know the status of the production process thanks to our regular progress reports. Once our valves reach their destiny, information about installation, maintenance, certificates or any other technical detail about the product will be available through a QR code on the label, allowing anyone in the supply chain to access the information 24/7.

Our facilities will be at your disposal for your own witness inspections prior to delivery, carrying out the third-party tests on our computerised test benches, to be included in our final quality dossier. After that upon approval, products will be dispatched to any point of the planet.





Tel: +34 961 479 011  
[www.comeval.es](http://www.comeval.es)  
[comeval@comeval.es](mailto:comeval@comeval.es)

